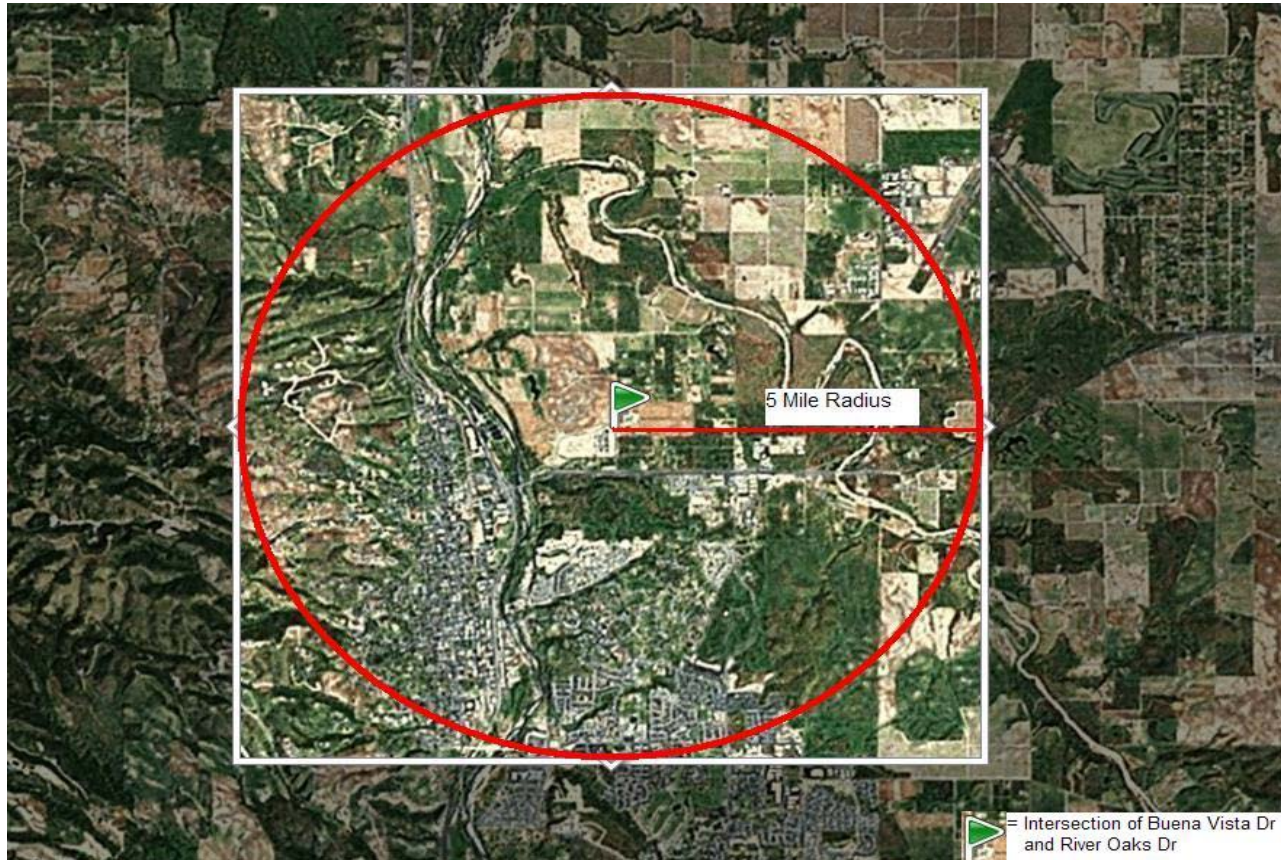


**Demographics for
Buena Vista Drive - 5 Mile Radius
Paso Robles, CA 93446**

	Buena Vista
Population	5-mi.
2008 Male Population	16,709
2008 Female Population	16,246
% 2008 Male Population	50.70%
% 2008 Female Population	49.30%
2008 Total Adult Population	24,977
2008 Total Daytime Population	36,473
2008 Total Daytime Work Population	18,739
2008 Median Age Total Population	35
2008 Median Age Adult Population	44
2008 Age 0-17	7,978
2008 Age 18-49	14,880
2008 Age 50-85+	10,098
Population Change	5-mi.
2008 Total Population	32,955
2008 Total Households	12,693
Population Change 1990-2008	10,478
Household Change 1990-2008	4,628
% Population Change 1990-2008	46.62%
% Household Change 1990-2008	57.38%
Population Change 2000-2008	4,958
Household Change 2000-2008	2,825
% Population Change 2000-2008	17.71%
% Households Change 2000-2008	28.63%
Housing	5-mi.
2000 Total Housing Units	10,189
2000 Occupied Housing Units	9,791
2000 Owner Occupied Housing Units	5,991
2000 Renter Occupied Housing Units	3,800
2000 Vacant Housing Units	398
Income	5-mi.
2008 Median Household Income	\$48,159
2008 Per Capita Income	\$27,681
2008 Average Household Income	\$71,868
2008 Household Income < \$10,000 - \$49,999	6620
2008 Household Income \$50,000-\$99,999	5,161
2008 Household Income \$100,000-\$199,999	794
2008 Household Income \$200,000+	119

	Buena Vista
Retail Sales Volume	5-mi.
2008 Children/Infants Clothing Stores	\$4,890,045
2008 Jewelry Stores	\$3,710,605
2008 Mens Clothing Stores	\$7,085,005
2008 Shoe Stores	\$6,506,071
2008 Womens Clothing Stores	\$12,205,980
2008 Automobile Dealers	\$85,941,657
2008 Automotive Parts/Acc/Repair Stores	\$10,587,062
2008 Other Motor Vehicle Dealers	\$3,192,460
2008 Tire Dealers	\$2,912,488
2008 Hardware Stores	\$1,373,202
2008 Home Centers	\$8,022,530
2008 Nursery/Garden Centers	\$3,091,087
2008 Outdoor Power Equipment Stores	\$1,015,449
2008 Paint/Wallpaper Stores	\$311,004
2008 Appliance/TV/Other Electronics Stores	\$8,242,556
2008 Camera/Photographic Supplies Stores	\$1,321,562
2008 Computer/Software Stores	\$3,936,862
2008 Beer/Wine/Liquor Stores	\$5,229,112
2008 Convenience/Specialty Food Stores	\$9,743,487
2008 Restaurant Expenditures	\$47,598,135
2008 Supermarkets/Other Grocery excl Conv	\$57,359,393
2008 Furniture Stores	\$8,346,441
2008 Home Furnishings Stores	\$5,399,631
2008 Gen Merch/Appliance/Furniture Stores	\$73,701,706
2008 Gasoline Stations w/ Convenience Stores	\$45,699,656
2008 Other Gasoline Stations	\$35,956,166
2008 Department Stores excl Leased Depts	\$81,944,263
2008 General Merchandise Stores	\$65,355,265
2008 Other Health/Personal Care Stores	\$5,447,624
2008 Pharmacies/Drug Stores	\$27,608,493
2008 Pet/Pet Supplies Stores	\$3,872,991
2008 Book/Periodical/Music Stores	\$1,214,294
2008 Hobby/Toy/Game Stores	\$1,302,091
2008 Musical Instrument/Supplies Stores	\$765,564
2008 Sewing/Needlework/Piece Goods Stores	\$231,875
2008 Sporting Goods Stores	\$4,956,091
2008 Video Tape Stores - Retail	\$676



Existing and 2025 Roadway Segment Utilization				
Street	Segment	Existing Daily Traffic	Existing Capacity Utilization	2025 Daily Traffic
Hwy 46	Union Rd to US 101	26,600	71%	45,500
Dallons Dr	Buena Vista Dr to Golden Hill	1,300	10%	2,400
N River Rd	SR46E to North City Limit	1,200	9%	1,300
River Oaks Dr	N River Rd to Buena Vista Dr	1,900	14%	2,600
Buena Vista Dr	SR46E to Experimental Station	4,400	20%	4,500

Daily Traffic = Average Daily Traffic on a Typical Tuesday, Wednesday or Thursday